



DOT0013 WARNING TACTILE

Dottac Stainless Steel Warning Tactile with a Polymer Black Top Insert (DOT0013) is a high-quality, slip-resistant solution made from 316 marine grade stainless steel. Its concentric groove design provides an excellent grip while the smooth outer edge ensures safety for all users. It's ideal for both outdoor and indoor environments, it is resistant to corrosion and easy to install and maintain. Compliant with Australian Standards, it is suitable for public spaces, transportation hubs, and commercial buildings.

FEATURES

Machined, with a black top polymer insert design on the horizontal face, and a smooth outer edge

Tested for compliance with AS 1428.4.1 2009

Tested for compliance with the NCC 2019 Section D clause 3.8 (TGSIs)

Tested for compliance with slip resistance requirements as detailed in HB 198

Substrates: Stone, Masonry, Timber, Vinyl, Carpet Tile, Porcelain, Ceramic, Glass Material

WARRANTY 5-year warranty on the product

SLIP RESISTANCE

Important information: To determine a classification of a slip resistance rating, see Australian Standards AS 4586: 2004 Slip Resistance Classification of New Pedestrian Surface Materials.

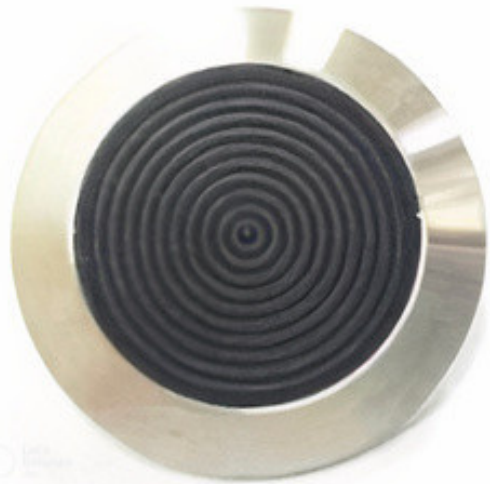
TEST	AS 4586 APPENDIX A: Wet Pendulum Test
FOUR S 96 SLIDER	= 54 CLASS = P5
TRL 55 SLIDER	= 44 CLASS = P5

LUMINANCE TESTING

Luminance contrast requirement of the National Construction Code (NCC 2019) 3.2 and the AS/NZ 1428.4.2009

TEST	AS/NZS 1428.4.1 2009 APPENDIX E PARAGRAPH E3
LUMINANCE REFLECTANCE RATING / WET	= 3.5
LUMINANCE REFLECTANCE RATING / DRY	= 3.5

TYPE	Stainless Steel Warning Tactile
MATERIAL	316 Marine Grade
FINISH	Machined / Cast
FIXING	Core Drill and Pressure Fit
DIMENSIONS	OUTER DIA: 35mm TOP DIA: 25mm THICKNESS: 5mm



DOTTAC
ABN: 42 153 893 933

T:08 6384 6349

Registered Address:
14 Kirke Street
Balcatta WA 6021

info@dottac.com.au
admin@dottac.com.au
www.dottac.com.au