



# DOT0018 WARNING TACTILE

Dottac Polyurethane Warning Tactile (DOT0018) is a high-quality, slip-resistant solution made from 316 marine grade black stainless steel. Its concentric groove design provides an excellent grip while the smooth outer edge ensures safety for all users. It's ideal for both outdoor and indoor environments, it is resistant to corrosion and easy to install and maintain. Compliant with Australian Standards, it is suitable for public spaces, transportation hubs, and commercial buildings.

## FEATURES

Machined, with concentric circle design on the horizontal face with a smooth outer edge

Tested for compliance with AS 1428.4

Tested for compliance with the NCC Section D clause 3.8 (TGSIs)

Tested for compliance with slip resistance requirements as detailed in HB 198

Substrates: Stone, Masonry, Timber, Vinyl, Carpet Tile, Porcelain, Ceramic, Glass Material

**WARRANTY 2 year warranty on the product**

## SLIP RESISTANCE

Important information: To determine a classification of a slip resistance rating, see Australian Standards AS 4586: 2004 Slip Resistance Classification of New Pedestrian Surface Materials.

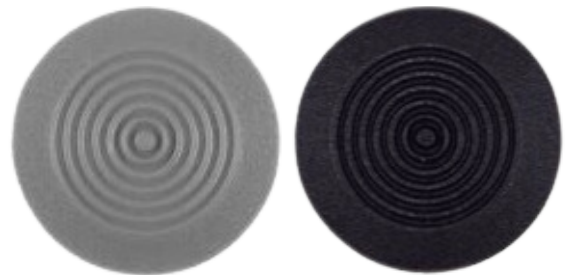
TEST	AS 4586 APPENDIX A: Wet Pendulum Test
FOUR S 96 SLIDER	Black = 55 CLASS = P5 Grey = 52 CLASS = P4
TRL 55 SLIDER	Black = 80 CLASS = P5 Grey = 73 CLASS = P5

## LUMINANCE TESTING

Luminance contrast requirement of the National Construction Code (NCC ) 3.2 and the AS/NZ 1428.4.2002

TEST	AS/NZS 1428.4.1 APPENDIX E PARAGRAPH E3
BLACK	
LUMINANCE REFLECTANCE RATING / WET	= 3.7
LUMINANCE REFLECTANCE RATING / DRY	=3.7
GREY	
LUMINANCE REFLECTANCE RATING / WET	=41.7
LUMINANCE REFLECTANCE RATING / DRY	=41.9

<b>TYPE</b>	Polyurethane
<b>MATERIAL</b>	Grey or Black Polyurethane
<b>FINISH</b>	Injection Moulded
<b>FIXING</b>	Core Drill and Pressure Fit
<b>DIMENSIONS</b>	<b>OUTER DIA:</b> 35mm <b>TOP DIA:</b> 25mm <b>THICKNESS:</b> 5mm



**DOTTAC**  
ABN: 42 153 893 933  
Registered Address:  
14 Kirke Street  
Balcatta WA 6021

T: 0423 418 168  
info@dottac.com.au  
admin@dottac.com.au  
[www.dottac.com.au](http://www.dottac.com.au)